

Ridflex® Ridflex® equestrian surfaces are manufactured to the highest standards and quality. To be able to fit all your requirements we can offer you the ready to use:

- ridflex® jump
- ridflex® dressage
- ridflex® Western
- ridflex® allround



The Ridflex® surface consists of 4 components:

- sand
- sandvlies for elasticity
- sandfaser for optimal grip
- sandgel for waterstorage

All these components can be ordered separately to optimize your existing surface.

A winner surface Off course we can help you individually to create your optimal equestrian surfaces. Together with Equi-Consultancy you can create your personal winner surface.

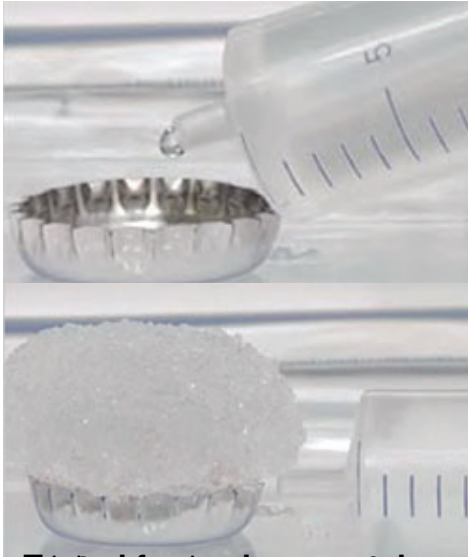
- less injuries
- dustfree
- durable
- all weather
- easy to maintain
- elastic
- good grip



The cost effective way off keeping the moisture in the surface is sand-gel. Sand-gel consist of water-storing granules with a enormous storing capability.

40 kilograms of sandgel can store 12.000 liter water. Excess water runs off, leaving the water-storing granules completely filled up. The granules slowly and evenly give the water back to the surface. When it rains the whole procedure starts over again.





~~tested for environmental compatibility. Subsequent tests were performed on the footings and the results were extremely durable. A well maintained~~



~~We offer mixes~~





Sales@ridflex.com and Sales@progrid.com are the primary contact points for all inquiries. For more information, please visit our website at www.ridflex.com or www.progrid.com.